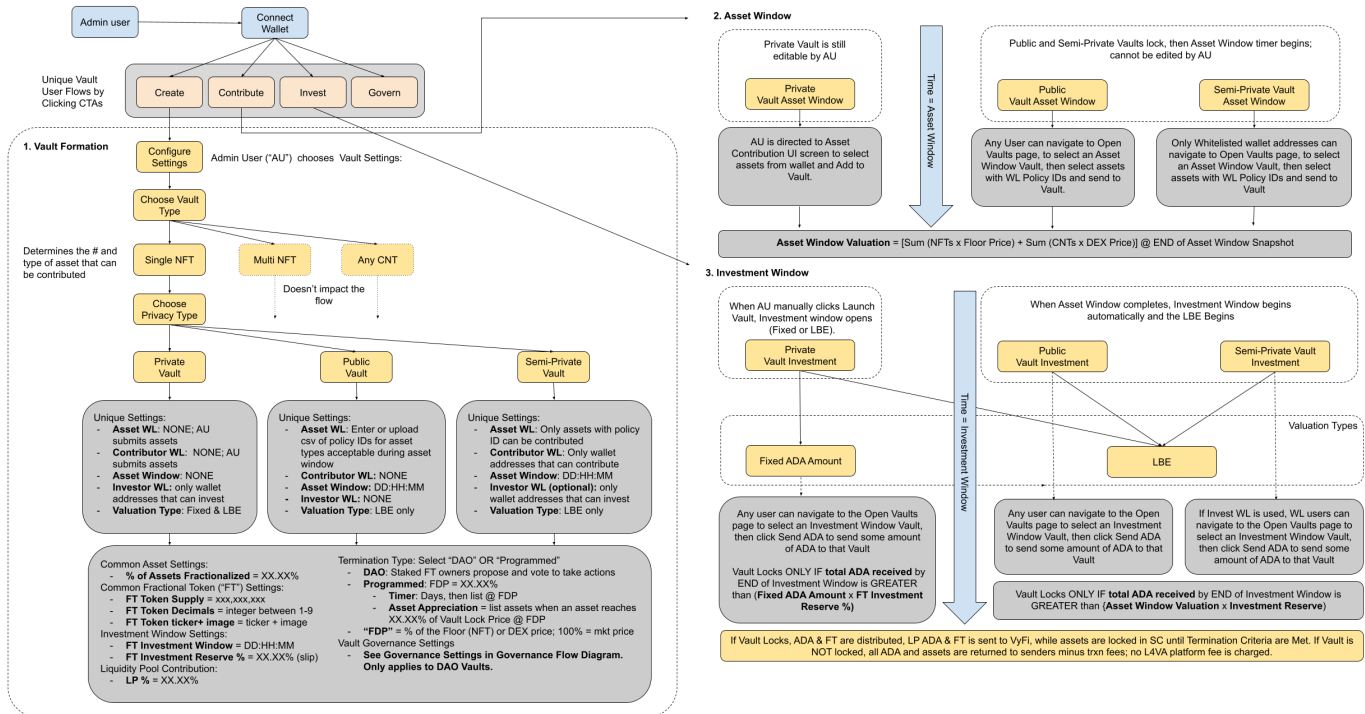


# Vault Formation & Fractionalization Flow (diagram)

See Vault Formulation & Fractionalization Flow Diagram below and [HERE](#).



This diagram covers the requirements for the user experience (UX) when navigating the user interface (UI) of the protocol for Vault Formation and Fractionalization. Vault Formation we refer to as "Create" the vault, while Fractionalization we refer to in two phases, the "Contribute" phase and the "Invest" phase.

In the Contribute phase, assets are chosen from contributors' (participants with access to the vault) wallets and sent to the smart contract vault.

In the Invest phase, investors (participants with access to the vault) may send ADA to the smart contract in exchange for an amount of Fractional Tokens representing rights to the vault smart contract and associated assets.

Revision #3

Created 5 December 2024 04:50:18 by Rob Eberenz

Updated 5 December 2024 06:55:19 by Rob Eberenz