

UI/UX Design

Purpose: Comprehensive design documentation covering all aspects of user interface and experience.

Key Contents:

- Design system principles and guidelines
- Color schemes, typography, and spacing rules
- Component specifications and usage guidelines
- User journey maps and flow diagrams
- Interaction patterns and animations
- Accessibility requirements
- Responsive design specifications
- Brand guidelines integration

- Design System Fundamentals
- Component Library
- Layout & Typography
- User Flows & Journeys
 - Vault Formation & Fractionalization Flow (diagram)
 - Governance Flow (diagram)
 - UX/UI User Journey Requirements (written)

- Interaction Patterns
- Responsive Design
- Accessibility Guidelines
- Brand Integration

Design System Fundamentals

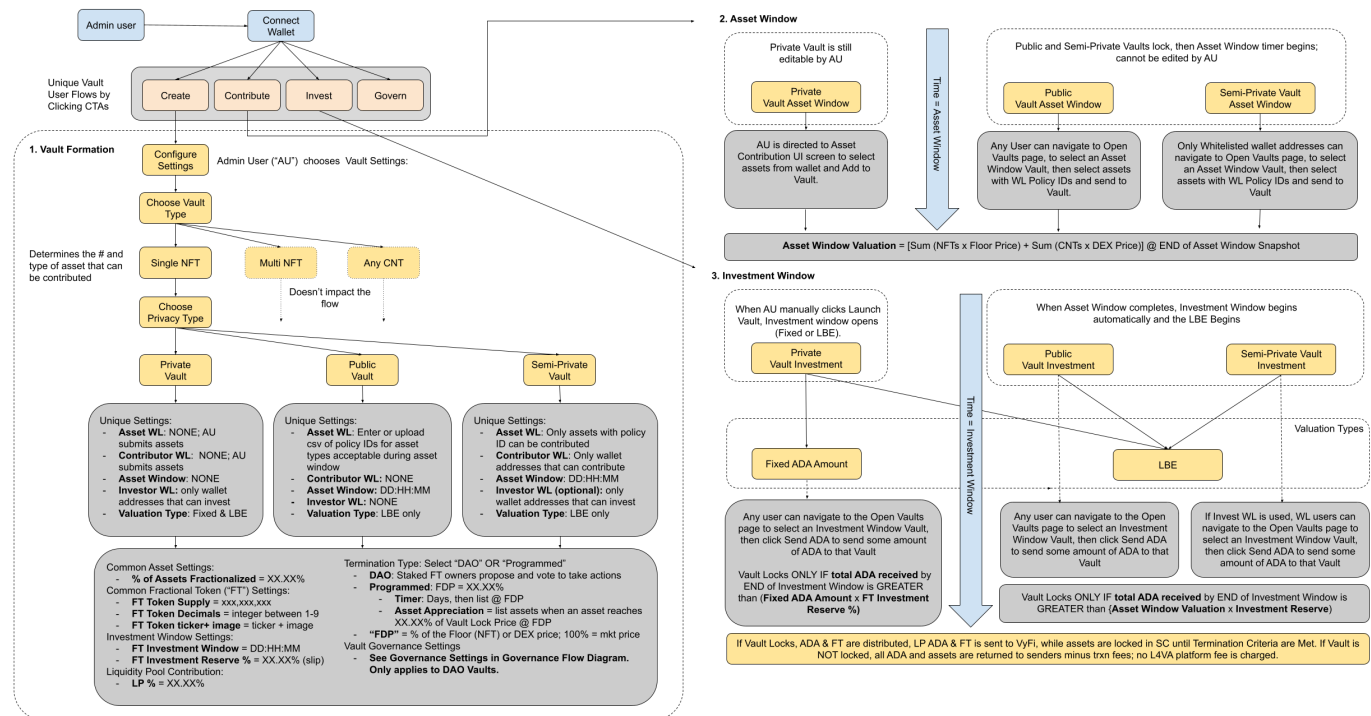
Component Library

Layout & Typography

User Flows & Journeys

Vault Formation & Fractionalization Flow (diagram)

See Vault Formulation & Fractionalization Flow Diagram below and [HERE](#).



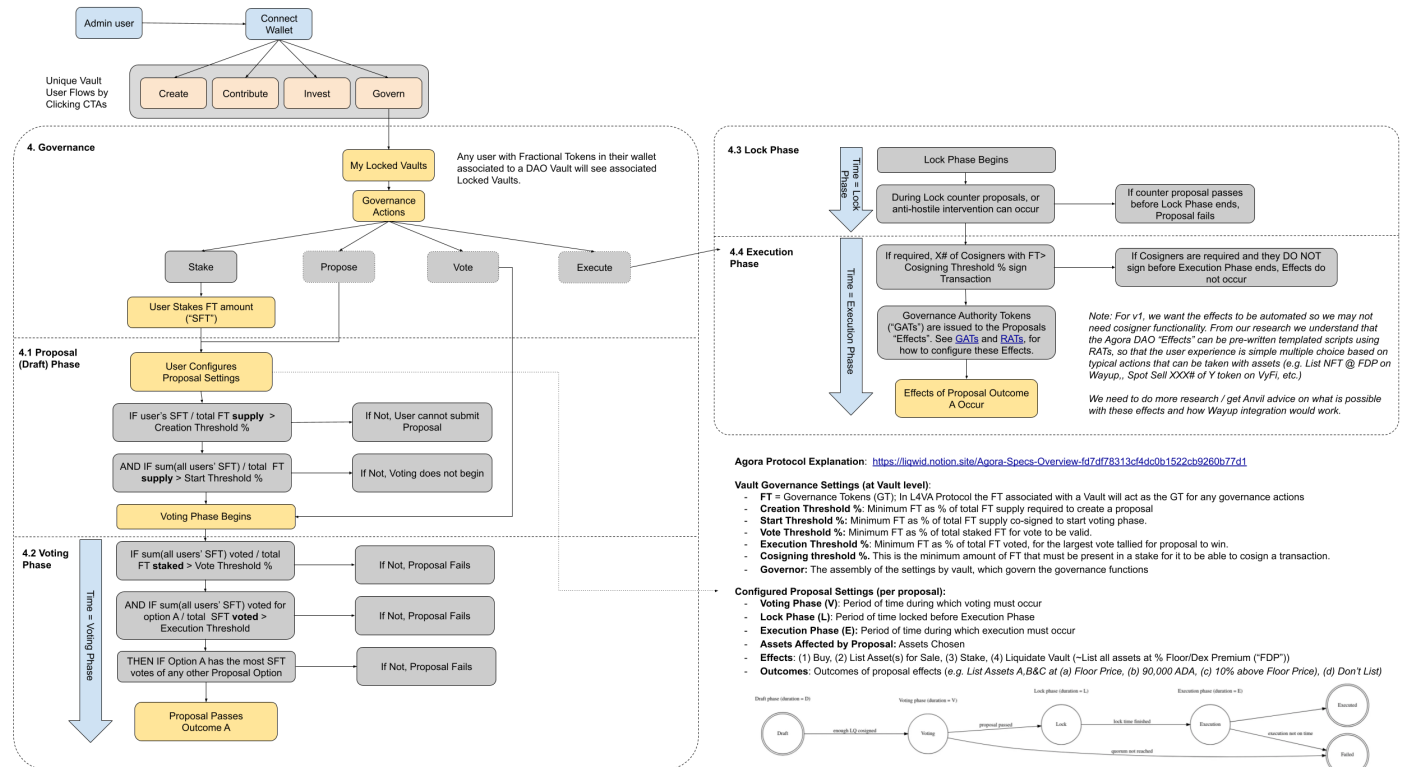
This diagram covers the requirements for the user experience (UX) when navigating the user interface (UI) of the protocol for Vault Formation and Fractionalization. Vault Formation we refer to as "Create" the vault, while Fractionalization we refer to in two phases, the "Contribute" phase and the "Invest" phase.

In the Contribute phase, assets are chosen from contributors' (participants with access to the vault) wallets and sent to the smart contract vault.

In the Invest phase, investors (participants with access to the vault) may send ADA to the smart contract in exchange for an amount of Fractional Tokens representing rights to the vault smart contract and associated assets.

Governance Flow (diagram)

See Governance Flow Diagram below and [HERE](#).



This diagram covers the requirements for the user experience (UX) when navigating the user interface (UI) of the protocol for Governance. Governance encompasses the framework of rights and processes with which holders of fractional token(s) (FT) associated with a particular vault can make proposals and vote on actions (or "Effects") to be taken by assets within a vault.

We have chosen to build the governance flows of the L4VA protocol on the Agora open source DAO framework, which was built by Liqwid Labs and is used for DAO governance across a range of applications in the Cardano ecosystem.

This diagram depicts how the Agora protocol settings work and how Effects will be driven via the governance of a vault by the holders of its associated FTs.

UX/UI User Journey Requirements (written)

Below are a summary of requirements on the UX/UI Journey. The full requirements are here:

<https://docs.google.com/document/d/1D8JvbElv1m3lQMOKN98yohKrrXIMYwHDbx7yU3uld9U/edit?usp=s>
haring

1. Vault Formation

- **User arrives at Vaults Homepage**
 - Clicks "Create Vault" CTA on the top right.
 - Opens ["My Vaults" / Create New Vault] tab.
- **Create New Vault** (vertical scroll form):
 - **Page 1: "1. Create Vault"**
 - **Vault Name:** Enter name.
 - **Vault Type:** Dropdown
 - One Asset
 - Multiple Assets
 - **Asset Type:** Dropdown
 - Non-fungible Asset (NFT)
 - Fungible Asset (FT)
 - **Asset Class:** Dropdown
 - Crypto, Commodity, Bond, Loan, Real Estate, Art, Utility, Other
 - **Whitelist/Blacklist:** Dropdown
 - Whitelist (policy IDs allowed)
 - Blacklist (policy IDs not allowed)
 - **Fractional Token ("FT") Supply:** Enter total supply (###,###,###).
 - **FT Decimals:** Dropdown (0-9).
 - **FT Thumbnail:** Upload image.
 - **Funding Window:**
 - Select (minutes, hours, days).
 - Enter number.
 - **Fractional Tokens Offered (%):** 0-100, display 0.00%.
 - **Fractional Tokens Retained (%):** Auto-calculated with 2 decimals.
 - **Liquidity Pool:** % of Proceeds in ADA and FT.
 - **Valuation Method:** Dropdown
 - Fixed (enter ADA amount).
 - Timer (enter reserve ADA).
 - If not met, Vault can be cancelled or auto-cancels.
 - **Asset Contribution:** Dropdown
 - Private (admin contributes).
 - Public (if Timer is chosen).
 - "Asset Contribution Window": Select (minutes, hours, days).
 - **CTAs**
 - Next Step (Select Assets).
 - Save for Later (returns to "My Vaults" as draft).
 - Delete (popup warns, delete, return to "My Vaults").

2. Fractionalization

- **Page 2: "Contribute"**
 - User lands on the "available vaults" page.
 - **Filter Options:**

- Vault Valuation: Min/Max ADA.
 - Vault Status: Draft, Asset Window Open, Funding Window Open, Funded, Closed.
 - Vault Type: Single or Multi Asset.
 - Asset Type: NFT, Fungible Token.
 - Policy ID.
 - **Sort Options:**
 - Card view/Table view (toggle).
 - Table: Sort by column headers.
 - **Select Vault**
 - Opens popup: Vault Info with Details & Invest CTAs.
 - **Page 3: "Invest"**
 - User lands on Vault Investment page:
 - Funding Window Remaining, Total FT Supply, % Offered, Tokens Remaining.
 - **Investment (ADA):** Input & Calculate CTA.
 - **CTAs:**
 - Submit Purchase (wallet opens to sign).
 - Cancel (returns to filter view).
 - Back (returns to previous page).
 - Confirmation Page: Time to Vault closing, ADA invested, FT Awards.
-

3. Governance

- **Page 4: "Govern"**
 - View Vaults with List/Card View.
 - Filter by Locked, Contributed, Invested, Archived Vaults.
 - **Locked Vaults:**
 - If 1+ Proposals live, show:
 - Effects, Time Remaining, "VOTE" CTA.
 - **Submit New Proposal:**
 - Options:
 - Distribute Rewards, Liquidate, Sell, Buy, Stake.
 - **Voting Process:**
 - Options: Yes/No.
 - Wallet opens to confirm based on FT amount.

Interaction Patterns

Responsive Design

Accessibility Guidelines

Brand Integration